



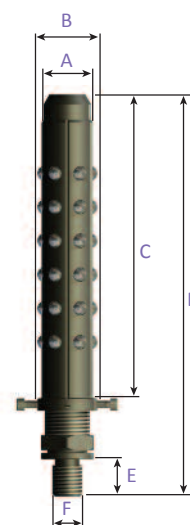
Highest integrity hand-held
coiled tubing handling tools



Features and benefits of CoilLOK™

- Designed and tested in accordance with DNV Standard for Certification No. 2.22 Lifting Appliances
- Instant hand-held connect and disconnect with locking failsafe
- No protrusions allowing the tool to pass easily through the injector head
- Standard designs available covering all possible sizes
- Custom made options for alternative applications
- High load capacity
- Field proven ball and taper mechanical grip
- Custom made interface and accessory design available

Coiled Tubing Handling Tools Dimensions Table



Tool	A (DIA/mm)	B (DIA/mm)	C (mm)	D (mm)	E (mm)	F (METRIC)
1"	18.7	25	168	234.5	25	M16 x 2.0
1.25" (1)	22	29	206.5	274.5	25	M16 x 2.0
1.25" (2)	24.5	30	232	302.5	25	M16 x 2.0
1.5" (1)	27	35	224	297.5	25	M16 x 2.0
1.5" (2)	30	36	227	300.5	25	M16 x 2.0
1.75" (1)	32.5	39	230	303.5	25	M16 x 2.0
1.75" (2)	34	41	230	303.5	25	M16 x 2.0
2" (1)	39	48	291	373.5	30	M24 x 3.0
2" (2)	41	47.5	243	321.5	30	M24 x 3.0
2.375"	47.5	56	287	371.5	30	M24 x 3.0
2.625"	50	65	355.5	449	30	M30 x 3.0
2.875"	56	71	310	414.5	40	M30 x 3.5
3.5"	72	87	285	399	40	M30 x 3.5

“The Balltec Coiled Tubing Handling tool is a great innovation. It is effortless to use and the ease of operation means that it can be installed in a matter of seconds. It will significantly reduce the time currently spent making up conventional CT connectors for stabbing the CT and it will also make the operator safer.”

Craig Fraser, Technical Specialist – Coiled Tubing & Pumping,
AKER QSERV LTD.

The Balltec Coiled Tubing Handling Tools are supplied with a choice of either a knurled nut or a hex nut as standard for client preference as shown below:

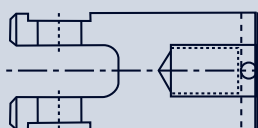


Knurled Nut

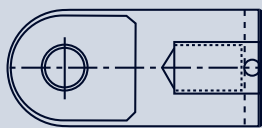


Hex Nut

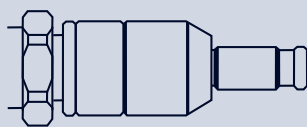
Balltec Coiled Tubing Handling Tools can be supplied with the standard thread or supplied to interface with any fitting to suit customer specification and application.



Clevis Head



Padeye



Knuckle Joint

Head Office

Balltec Ltd
Unit 2B, The Gateway White
Lund Industrial Estate
Morecambe LA3 3PB
UK

Tel: +44 (0)1524 733388

Fax: +44 (0)1524 733399

Email: sales@balltec.com

China

Triastoria Group
6th floor, Chainatex Mansion
No. 19 Jianguomennei Ave
East Chang'an St
Beijing 100005
China

Email: enquiries@balltec.com

USA

Balltec Ltd
Suite 850
11490 Westheimer
Houston
Texas 77077
USA

Tel: +1 713 425 6317

Email: usa@balltec.com

Malaysia

Zuraina Vermeulen
Block A-2-1 (level 4)
Menara Uncang Emas (ue3)85
Jalan Loke Yew
55200 Kuala Lumpur
Malaysia

Email: mena@balltec.com

Selected clients



Balltec Headquarters is in Lancashire, UK.
Balltec also has representatives across a range of time zones supporting customers globally.
Please contact Balltec directly by telephone, fax or email.

